

TR 900

Height Adjustable Bathtub

*Hygiene Equipment
Designed for People*

Spare part list TR 900, -C, -CW/900A , -CA, -CWA, 900SS

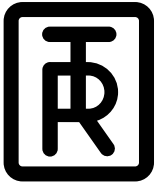


Registered at Medical Products
Agency, Sweden,
as a MD Class 1 product,
MDD 93/42EEC.

TR reserves the right to make
design changes and/or
improvements without notice.



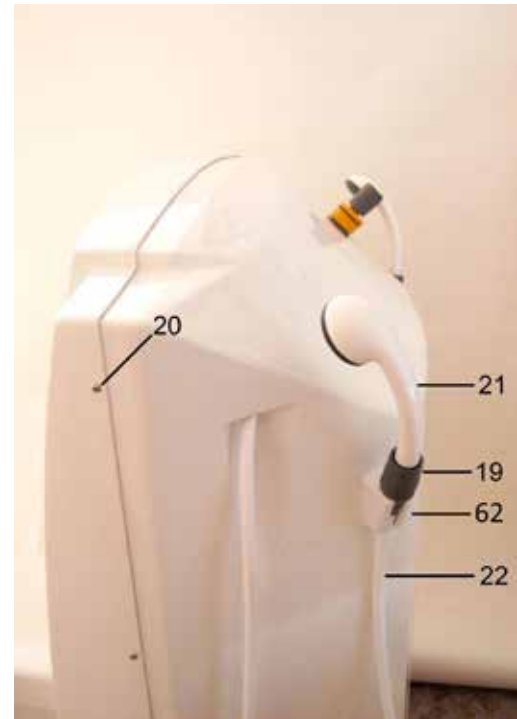
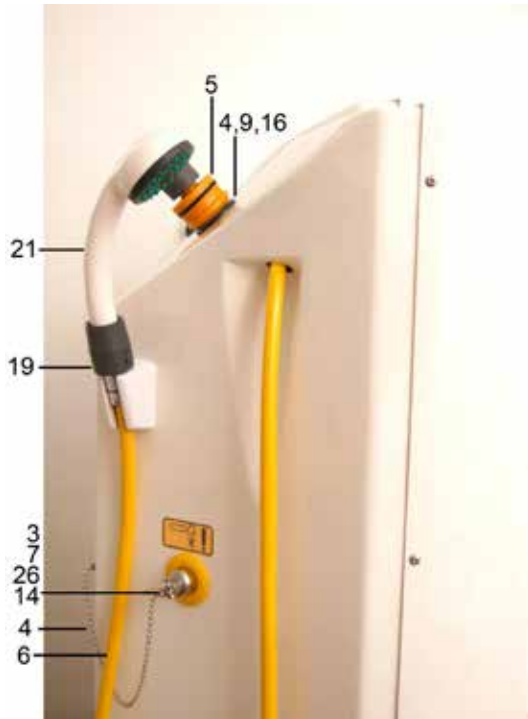
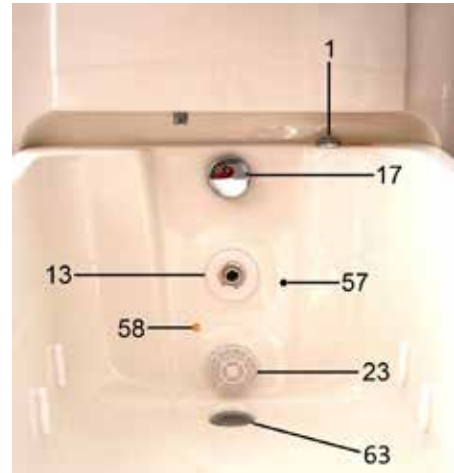
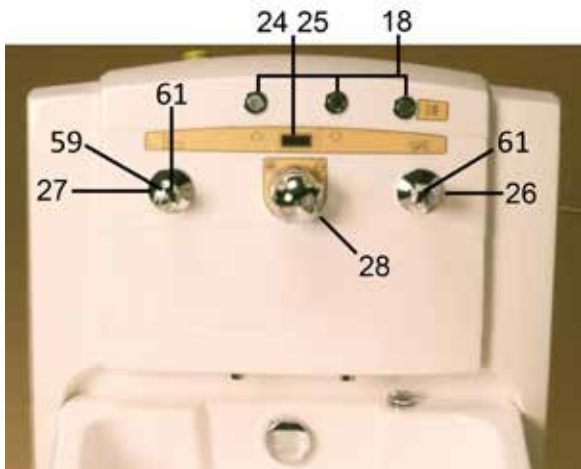
TR EQUIPMENT



TR 900

Height Adjustable Bathtub

Hygiene Equipment
Designed for People

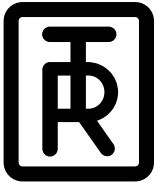


Head office
TR Equipment AB, Sweden
Phone: +46 140 38 50 60
info@trequipment.se
www.trequipment.com

Group Subsidiaries
TR Group Inc, US, Phone: +1 (800) 752 6900
TR Equipment Ltd, UK, Phone: +44 (0) 844 335 8386
TRanspoRehaMed GmbH, Germany, Phone: +49 (0) 212 645850-0



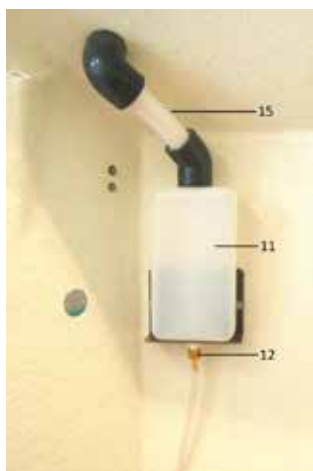
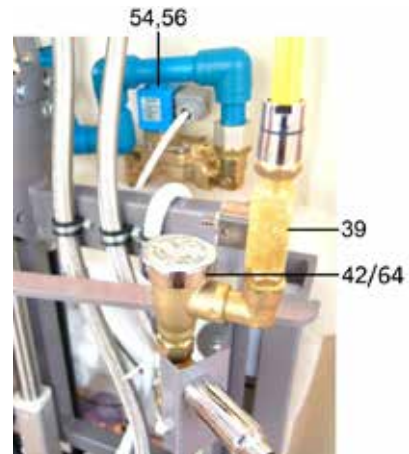
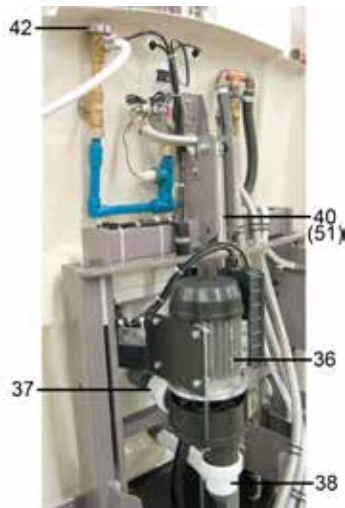
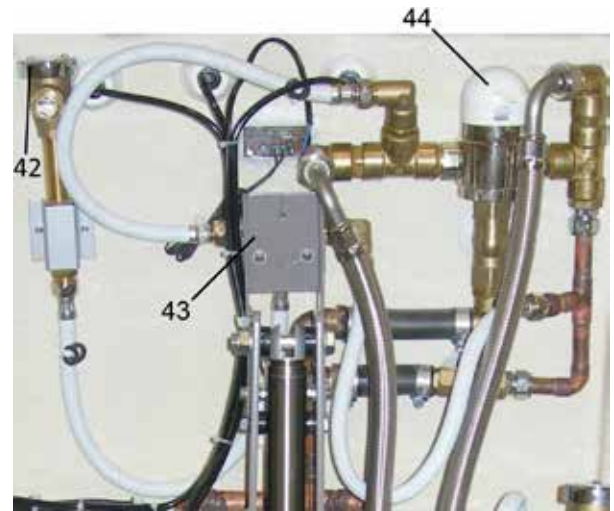
TR EQUIPMENT



TR 900

Height Adjustable Bathtub

Hygiene Equipment
Designed for People

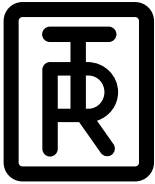


Head office
TR Equipment AB, Sweden
Phone: +46 140 38 50 60
info@trequipment.se
www.trequipment.com

Group Subsidiaries
TR Group Inc, US, Phone: +1 (800) 752 6900
TR Equipment Ltd, UK, Phone: +44 (0) 844 335 8386
TRanspoRehaMed GmbH, Germany, Phone: +49 (0) 212 645850-0



TR EQUIPMENT



TR 900

Height Adjustable Bathtub

Hygiene Equipment
Designed for People

When ordering spare parts please specify model and serial number, see label on the bathtub.

Position	Art No	Description
1	850610	Air mix control
3	7426294	Bushing, cleaning valve
4	850239	Chain
5	7426823	Cleaning adapter, add 829400
6	829096	Cleaning hose, yellow
7	829289	Cleaning valve incl key
8	3426346	Drainage hose, Hose length 1 M + 0,5 M plastic pipe
9	3426296	Fixation for cleaning lid chain
10	3418105-02	Foot for leg
	7125655	Footsupport height 95 mm
	7126911	Footsupport special height 145 mm
13	850606	Jet
14	829289-02	Key for cleaning valve
16	7426293	Lid, cleaning bottle
17	829280	Overflow, plug and drainage
63	829279	Plug for drainage
18	829398	Push button, pneumatic
19	829400	Quickcoupling female
19	829401	Quickcoupling male
20	833170-5016	Screw for panelback
20	3426349	Nut, panel cover
21	829171	Shower handle
	829172	Bracket, show handle
22	829097	Shower hose, white
23	850600	Strain 10-6906
24	819362	Thermometer Celcius
25	819362-2	Thermometer Fahrenheit
26	829307	Valvestem 1/2
26	829288	Valve 1/2" threaded compl
27	829311	Valvestem 3/4
27	829293	Valve 3/4" threaded compl
28	200025	Thermostat Rada 320
29	850620	Valve with strainer 3/4"
30	7418351	Flexible hose 3/4" (cold/hot)
31	829066	Checkvalve 3/4" (cold/hot)
32	820495-0127	Checkvalve 1/2" (cleaning)
33	7426262-02	Flexible hose 1/2" (cleaning)

Head office

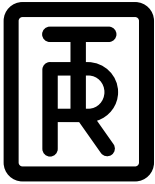
TR Equipment AB, Sweden
Phone: +46 140 38 50 60
info@trequipment.se
www.trequipment.com

Group Subsidiaries

TR Group Inc, US, Phone: +1 (800) 752 6900
TR Equipment Ltd, UK, Phone: +44 (0) 844 335 8386
TRanspoRehaMed GmbH, Germany, Phone: +49 (0) 212 645850-0



TR EQUIPMENT



TR 900

Height Adjustable Bathtub

Hygiene Equipment
Designed for People

Position	Art No	Description
34	820198-5258	Hexagon nipple 3/4"
35	820198-5233	Hexagon nipple 1/2"
36	819041	Hydropump 110 V
36	819042-02	Hydropump 230 V from 2009-10-01
	3329604	Bracket Hydropump
36	819041-3	Hydropump 110 V Aerospa from 2011-08-01
36	819041-5	Hydropump 230 V Aerospa from 2011-08-01
	3330892	Bracket Hydropump Aerospa from 2011-08-01
	3430893	Spacer for bracket Aerospa from 2011-08-01
37	3326799	Hydro pipe incl injector
38	3326798	Hydro pipe to pump
39	829070	Injector cleaning
40	819081	Actuator 230 V
40	819083	Actuator 110 V
41	850192	Gasspring
42	829069	Watts non return valve
43	829284	Thermostat Rada 215 T3
44	829286	Thermostat Rada 222 T3
	7426193	Hose 3/4 hot/cold water L=1,5 m
	7426262	Hose 1/2 cold/cleaning L=1,45 m
	2226048	Plumbing manifold, blue plastic
	829293-02	Chrome knob - Red
	829293-03	Chrome knob - Blue
	829293-04	Bushing for valve (White)
11	850614	Cleaning bottle
	3325835	Front foot
	3426029	S.S. Cover for front foot
15	3326268	Cleaning filling pipe
12	829088	Hose connection for cleaning bottle
2	819364	Electronic enclosure
	810218-8072	Ground/Zero rail
	3326179	Bracket for desinf. valve
	3325839	Legs TR 900 Left
	3325839-02	Legs TR 900 Right
	829065	Watts 289 non return valve
	829067-02	Cartridge Assembly for Rada 320 CF

For baths from
2000 until feb
2006 a bracket
and Hydro pipe
(pos 38) is
needed)

Head office

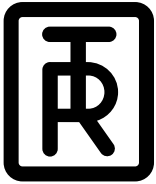
TR Equipment AB, Sweden
Phone: +46 140 38 50 60
info@trequipment.se
www.trequipment.com

Group Subsidiaries

TR Group Inc, US, Phone: +1 (800) 752 6900
TR Equipment Ltd, UK, Phone: +44 (0) 844 335 8386
TRanspoRehaMed GmbH, Germany, Phone: +49 (0) 212 645850-0



TR EQUIPMENT



TR 900

Height Adjustable Bathtub

Hygiene Equipment
Designed for People

Special parts for Autofill

51	819085	Actuator 230 V Autofill
51	819084	Actuator 110 V Autofill
52	819374	Top circuit board Autofill
53	819376	Lower circuit board Autofill
	819376-02	Lower circuit board Autofill -08
54	820452-7818	Solenoid valve 3/4" Serial no. lower than 25552
	829181	Solenoid valve 3/4" (OEM) Incl. coil, Serial no. higher than 25552
55	820452-7800	Solenoid valve 1/2" Serial no. lower than 25552
	829180	Solenoid valve 1/2" (OEM) Incl. coil, Serial no. higher than 25552
56	820452-8102	Coil for solenoid valve Serial no. lower than 25552
	829184	Coil for solenoid valve (OEM) Serial no. higher than 25552. 230 V
57	3427553	Level sensor
	7327238	Label, front panel CWA
	7327239	Label, front panel A/CA
58	3425961	Nipple, temp sensor
58	819378	Tempsensor
	200015	Desinf. Europe Bath X
	3326179	Bracket for desinf. valve
	3325839	Tripod left
	3325839-02	Tripod right
	829065	Non return valve watts 289
	829067-02	Cartridge Assembly for Rada 320CF

Risk 5 Gantry Spares

	7427034	Shower handle
	820818-0663	Strainer, shower handle
	829094	Shower hose white L=3,4 m
	829095	Shower hose yellow L=3,4 m

Head office

TR Equipment AB, Sweden
Phone: +46 140 38 50 60
info@treqipment.se
www.treqipment.com

Group Subsidiaries

TR Group Inc, US, Phone: +1 (800) 752 6900
TR Equipment Ltd, UK, Phone: +44 (0) 844 335 8386
TRanspoRehaMed GmbH, Germany, Phone: +49 (0) 212 645850-0



TR EQUIPMENT